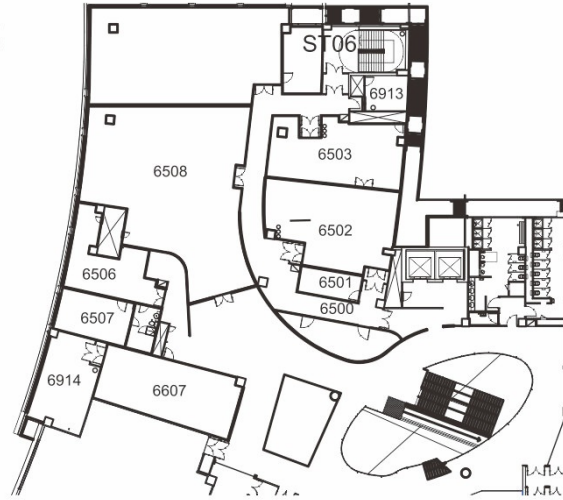


Department of Electronic Engineering
Locations of Laboratories

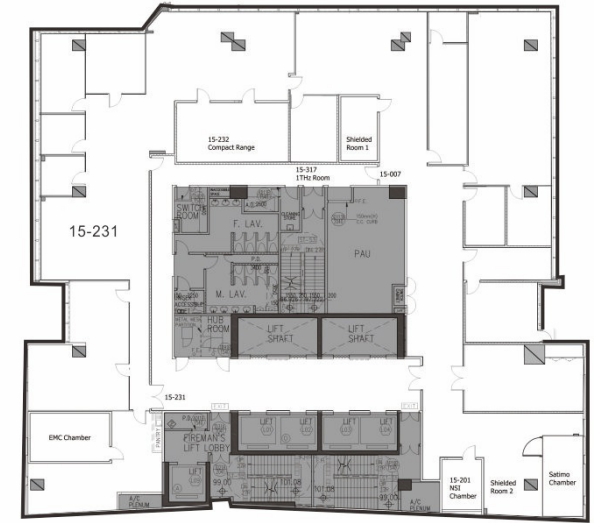
| | | |
|---------------------|---|-----------------------|
| P1401 | Laboratory Support Unit | 實驗室支援組 |
| P1402 | Innovation Centre | 創新中心 |
| P1404 | Control Systems and Power Electronics Laboratory | 控制系統及電力電子實驗室 |
| P1405 | Electronic Packaging Technology Laboratory | 電子封裝技術實驗室 |
| P1406 | Internet Technology Laboratory | 互聯網科技實驗室 |
| P1408 | EPA Centre | 電子封裝及組裝暨失效分析及可靠工程中心 |
| P1410 | Lab Support Unit – Student Workshop | 實驗室支援組 – 學生工場 |
| P1412 | Student Terminal Room | 學系電腦室 |
| P1413 | Optoelectronics Laboratory | 光電子實驗室 |
| P1442 | Student Terminal Room | 學系電腦室 |
| P1602 | Lab Support Unit - PCB Fabrication Room | 實驗室支援組 - 印刷電路板制作室 |
| P1607 /P1610 /P1625 | Optoelectronics Laboratory | 光電子實驗室 |
| P1615 | Cloud Computing Centre | 雲端運算中心 |
| P1616 | Neural Interface Research Laboratory | 神經介面研究實驗室 |
| P1618 | Signal Processing and Biocomputing Centre | 訊號處理及生物信息研究中心 |
| P1622 | - | - |
| P1624 | Lab Support Unit - Goods Receiving Counter | 實驗室支援組-收貨處 |
| P1628 | Power Electronics & Intelligent Systems Laboratory | 電力電子及智能系統研究室 |
| P1628 | Applied Power Electronics Research Unit | 應用電力電子研究組 |
| P1675 | - | - |
| P1800 | Digital Systems Laboratory I | 數碼系統實驗室一 |
| P1802 | Digital Systems Laboratory II | 數碼系統實驗室二 |
| P1806 | Computer Networking Laboratory | 電腦網絡實驗室 |
| P1807 | Teletraffic Engineering & Switching Unit | 電訊業務工程暨交換技術實驗室 |
| P1808 | Data Communications Laboratory | 數據通訊實驗室 |
| P1809 / P1812 | General Teaching Laboratory | 綜合基本教學實驗室 |
| AC2 6508 | Digital and Mobile Communications Laboratory | 數字通訊實驗室 |
| AC3 15-231 | Applied Electromagnetics Laboratory / State Key Lab of Millimeter-Waves | 應用電磁學實驗室 / 毫米波國家重點實驗室 |

EE Laboratories Location Maps

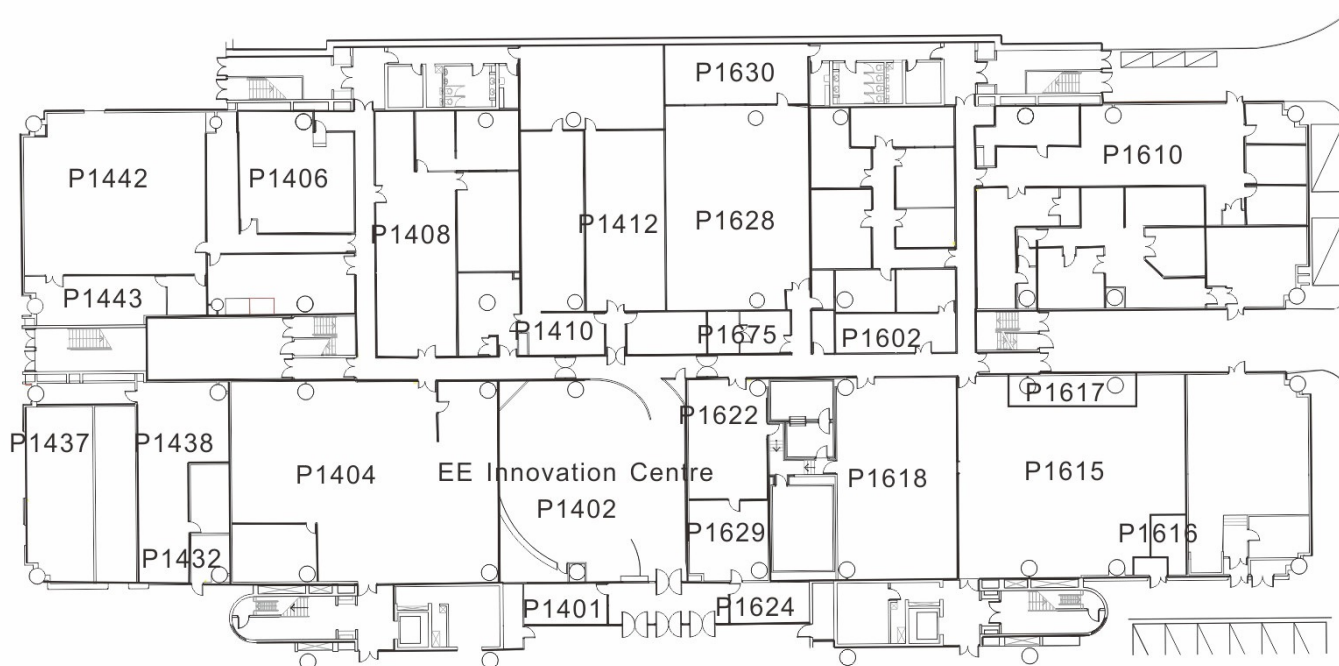
電子工程學系實驗室位置圖



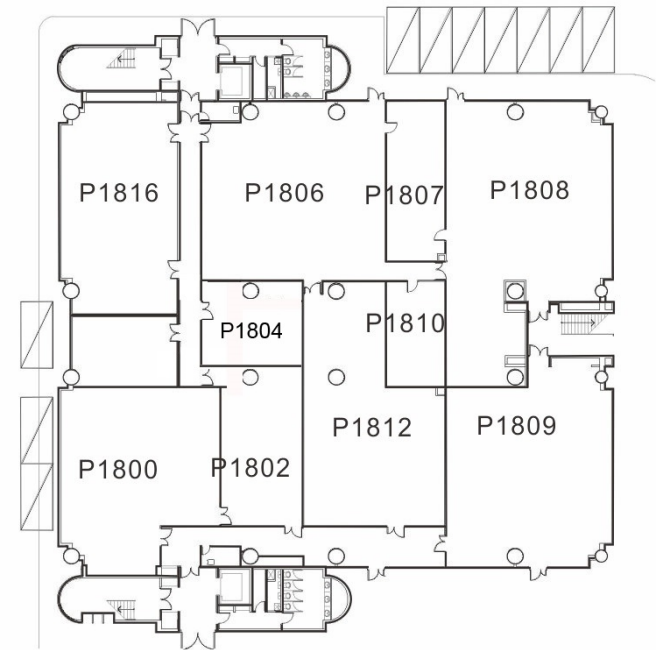
AC-2 6508



AC-3 15-231



AC-1 Purple Zone G/F Lift 1



AC-1 Purple Zone G/F Lift 17