

Appendix 7

RPI questionnaire responses

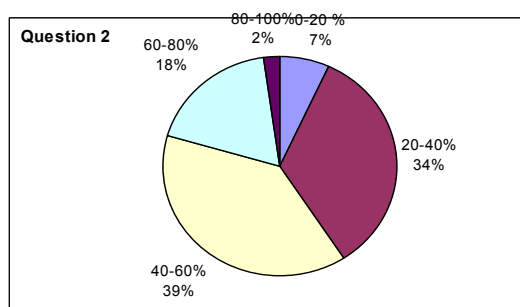
No fo respondents 45

Question 1 Do you own a computer?

| | |
|-----|----|
| Yes | 42 |
| No | 3 |

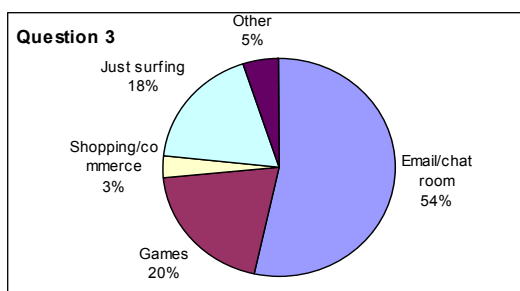
Question 2 What proportion of time do you use your computer for schoolwork?

| | No. | % |
|---------|-----|-------|
| 0-20 % | 3 | 6.82 |
| 20-40% | 15 | 34.09 |
| 40-60% | 17 | 38.64 |
| 60-80% | 8 | 18.18 |
| 80-100% | 1 | 2.27 |



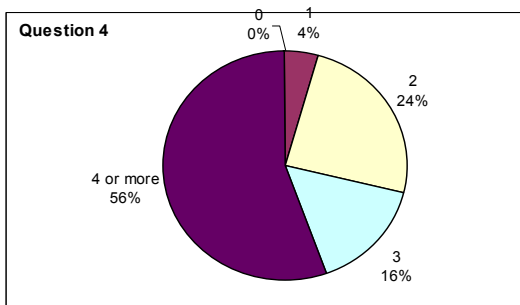
Question 3: Other than schoolwork, what computer application takes up most of your time?

| | No. | % |
|-------------------|-----|-------|
| Email/chat room | 32 | 53.33 |
| Games | 12 | 20.00 |
| Shopping/commerce | 2 | 3.33 |
| Just surfing | 11 | 18.33 |
| Other | 3 | 5.00 |



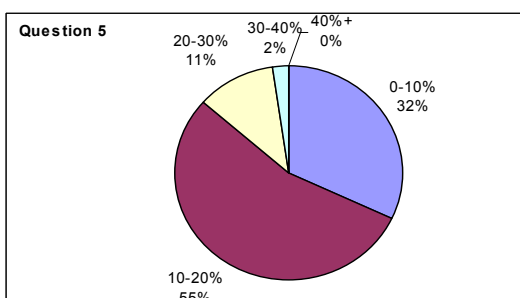
Question 4: How many studio-type courses have you taken before this one?

| | No. | % |
|-----------|-----|-------|
| 0 | 0 | 0.00 |
| 1 | 2 | 4.44 |
| 2 | 11 | 24.44 |
| 3 | 7 | 15.56 |
| 4 or more | 25 | 55.56 |



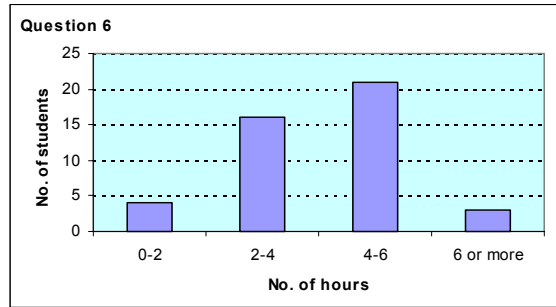
Question 5: On this course, when in the studio, what is the ratio of time is spent on presentations by the instructor to other coursework?

| | No. | % |
|--------|-----|-------|
| 0-10% | 14 | 31.82 |
| 10-20% | 24 | 54.55 |
| 20-30% | 5 | 11.36 |
| 30-40% | 1 | 2.27 |
| 40%+ | 0 | 0.00 |



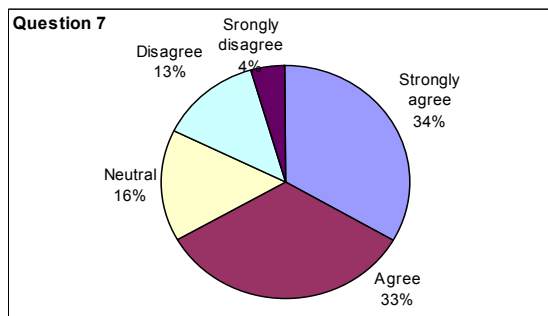
Question 6: On average, how many hours a week do you spend outside the scheduled studio classes on work related to this course? (Include any open shop time).

| | No. | % |
|-----------|-----|-------|
| 0-2 | 4 | 9.09 |
| 2-4 | 16 | 36.36 |
| 4-6 | 21 | 47.73 |
| 6 or more | 3 | 6.82 |



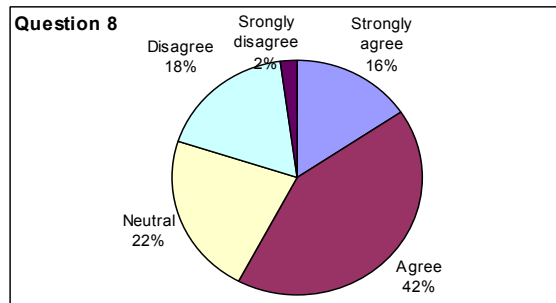
Question 7: It is easier for me to ask questions or express my ideas during discussions with my group in the studio teaching classes than to do the same in front of the lecturer and the whole class in traditional lectures.

| | No. | % |
|-------------------|-----|-------|
| Strongly agree | 15 | 33.33 |
| Agree | 15 | 33.33 |
| Neutral | 7 | 15.56 |
| Disagree | 6 | 13.33 |
| Strongly disagree | 2 | 4.44 |



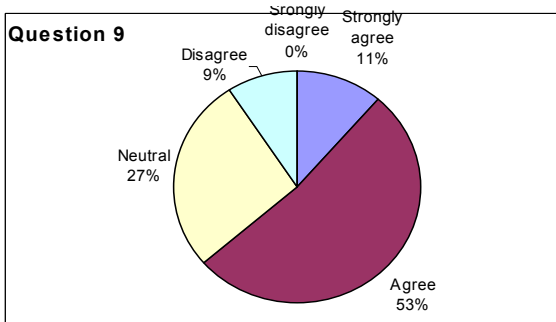
Question 8: After discussions with my group members, I have better chances to reinforce or correct my concepts quickly.

| | No. | % |
|-------------------|-----|-------|
| Strongly agree | 7 | 15.56 |
| Agree | 19 | 42.22 |
| Neutral | 10 | 22.22 |
| Disagree | 8 | 17.78 |
| Strongly disagree | 1 | 2.22 |



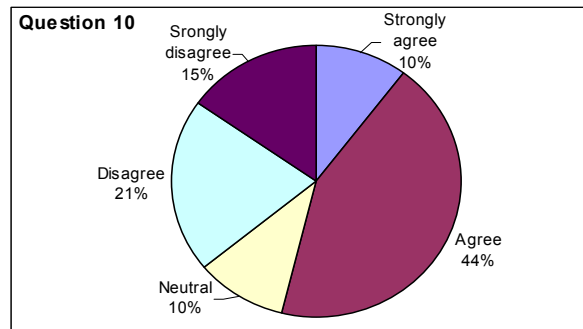
Question 9: I have more confidence to ask the lecturer questions or to express my ideas to the lecturer after discussing with my group members.

| | No. | % |
|-------------------|-----|-------|
| Strongly agree | 5 | 11.11 |
| Agree | 23 | 51.11 |
| Neutral | 12 | 26.67 |
| Disagree | 4 | 8.89 |
| Strongly disagree | 0 | 0.00 |



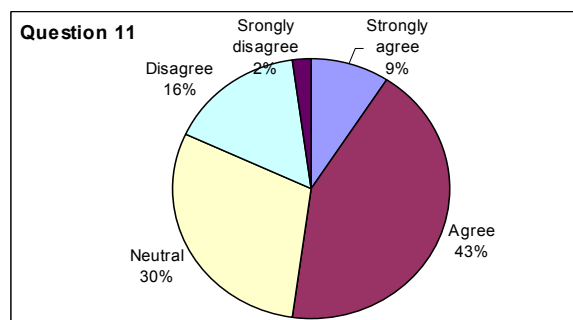
Question 10: I can learn more efficiently from the studio teaching approach.

| | No. | % |
|-------------------|-----|-------|
| Strongly agree | 4 | 8.89 |
| Agree | 17 | 37.78 |
| Neutral | 4 | 8.89 |
| Disagree | 8 | 17.78 |
| Strongly disagree | 6 | 13.33 |



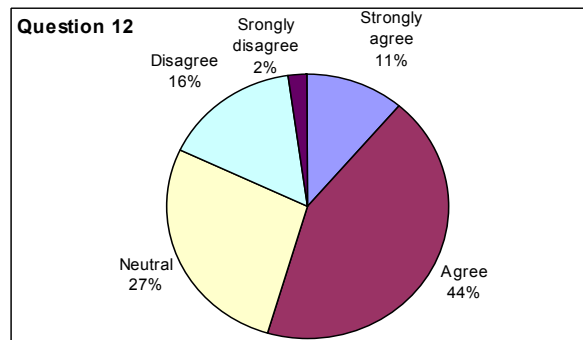
Question 11: In the studio, I have a chance of know how other students handle the same problems, and can sometimes learn different ways of thinking, which cannot be achieved through the traditional system of assignment submitting and

| | No. | % |
|-------------------|-----|-------|
| Strongly agree | 4 | 8.89 |
| Agree | 19 | 42.22 |
| Neutral | 13 | 28.89 |
| Disagree | 7 | 15.56 |
| Strongly disagree | 1 | 2.22 |



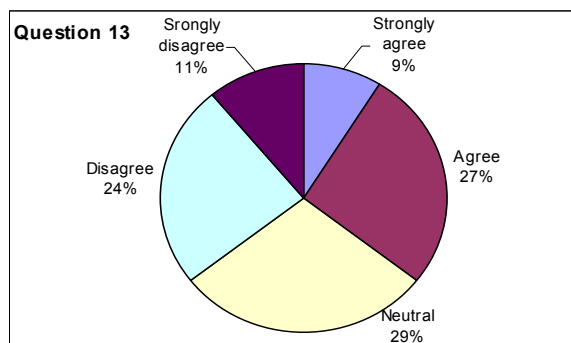
Question 12: If a lot of students have questions when solving a problem or they get things wrong in the same problem, studio teaching gives opportunities to the lecturer to repeat the corresponding facts, concepts or techiques right away.

| | No. | % |
|-------------------|-----|-------|
| Strongly agree | 5 | 11.11 |
| Agree | 19 | 42.22 |
| Neutral | 12 | 26.67 |
| Disagree | 7 | 15.56 |
| Strongly disagree | 1 | 2.22 |



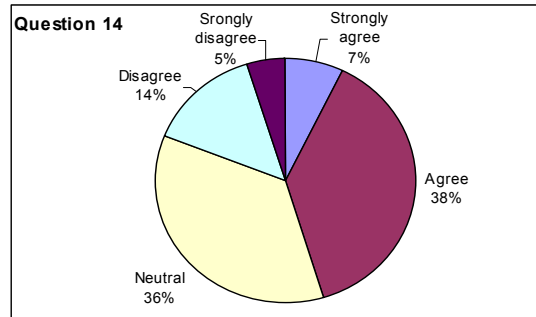
Question 13: It is easier for me to follow the materials delivered in a studio teaching approach.

| | No. | % |
|-------------------|-----|-------|
| Strongly agree | 4 | 8.89 |
| Agree | 12 | 26.67 |
| Neutral | 13 | 28.89 |
| Disagree | 11 | 24.44 |
| Strongly disagree | 5 | 11.11 |



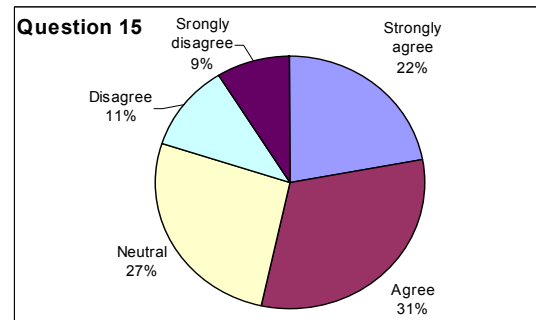
Question 14: The present studio teaching classes have successfully focused on student-centred learning rather than teacher-centred teaching.

| | No. | % |
|-------------------|-----|-------|
| Strongly agree | 3 | 6.67 |
| Agree | 16 | 35.56 |
| Neutral | 15 | 33.33 |
| Disagree | 6 | 13.33 |
| Strongly disagree | 2 | 4.44 |



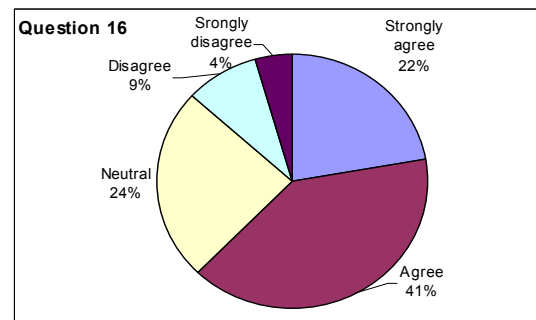
Question 15: If the same materials are taught by the same lecturer, I think I will learn more during studio teaching classes than in traditional teaching classes.

| | No. | % |
|-------------------|-----|-------|
| Strongly agree | 10 | 22.22 |
| Agree | 14 | 31.11 |
| Neutral | 12 | 26.67 |
| Disagree | 5 | 11.11 |
| Strongly disagree | 4 | 8.89 |



Question 16: If the same materials are taught by the same lecturer both in studio teaching mode and traditional teaching mode, I prefer attending classes in the studio teaching mode.

| | No. | % |
|-------------------|-----|-------|
| Strongly agree | 10 | 22.22 |
| Agree | 18 | 40.00 |
| Neutral | 11 | 24.44 |
| Disagree | 4 | 8.89 |
| Strongly disagree | 2 | 4.44 |



Question 17: My attendance in the studio teaching classes is:

| | No. | % |
|---------|-----|---|
| 0-20% | 0 | |
| 20-40% | 0 | |
| 40-60% | 0 | |
| 60-80% | 1 | |
| 80-100% | 44 | |

Question 18: I feel that I have been ?% enthusiastic in the activities in the studio teaching classes.

| | No. | % |
|---------|-----|-------|
| 0-20% | 2 | 4.44 |
| 20-40% | 1 | 2.22 |
| 40-60% | 8 | 17.78 |
| 60-80% | 19 | 42.22 |
| 80-100% | 13 | 28.89 |

