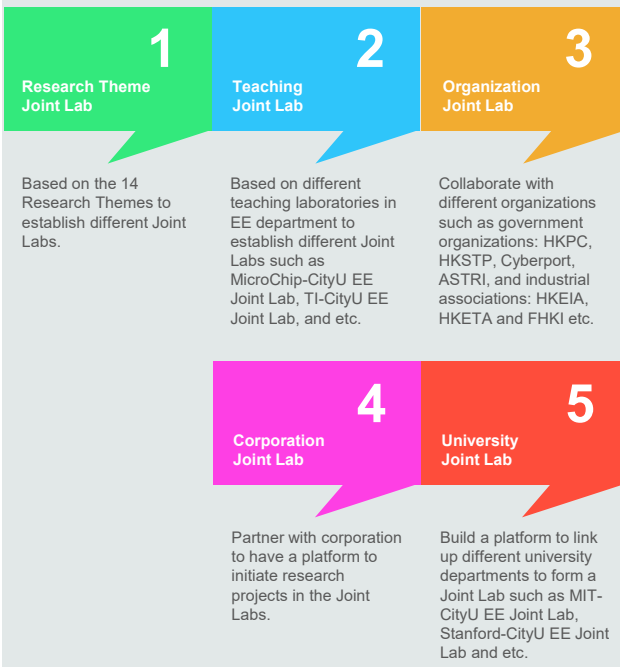


# CityU EE Research Theme

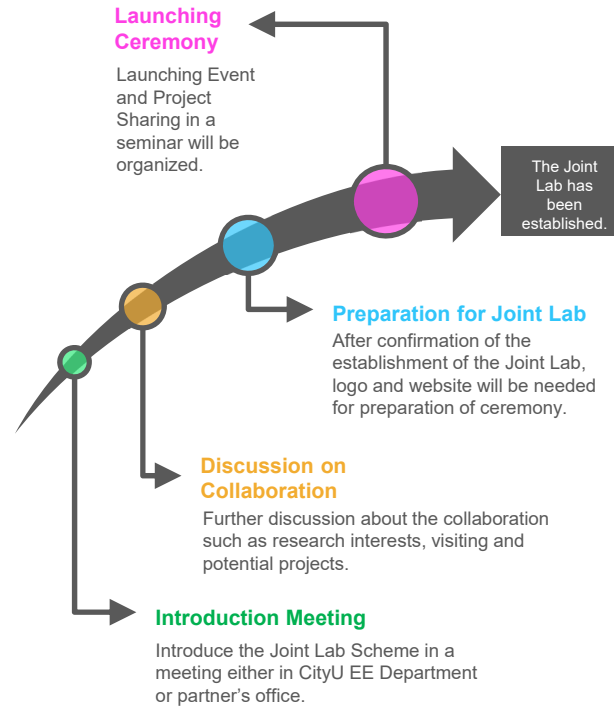
- Antenna Design
- Big data, Machine Learning and Artificial Intelligence
- Bioinformatics
- Biomedical System, Biosensors, Bioelectronics
- Computer Engineering
- Control System and Optimisation
- Microelectronic Devices and Circuits
- Nanotechnology and Nanodevices
- Networking and Internet of Things (IoT)
- Photonics
- Power Electronics and Systems
- Signal and Image Processing
- Terahertz and Millimeter Waves
- Wireless Communications

## CityU EE Joint Lab Scheme

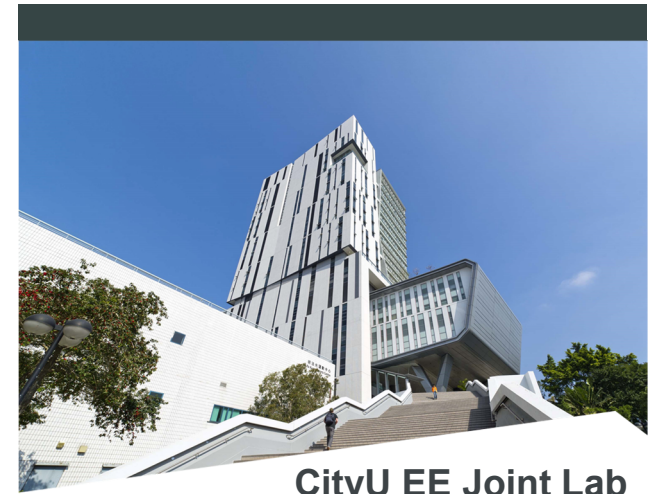
There are 5 types of CityU EE Joint Lab. The Joint Lab scheme can provide a platform to link up with different partners based on Research Theme, Teaching, Organization, Corporation and Institutional Department to drive closer collaborations.



# Procedures of the CityU EE Joint Lab Scheme

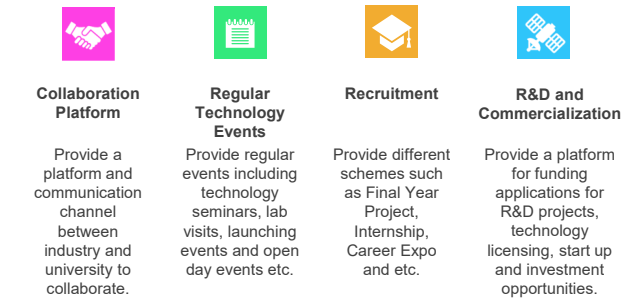


There are five steps to form a Joint Lab. The MOU will be signed between two parties. Then we will announce the collaboration in the launching ceremony.



## CityU EE Joint Lab

CityU EE Joint Lab is a Scheme of collaboration with industrial associations, research centres, corporates and organisations. Collaborative areas include setting up lab banner in EE Department, creating an online platform on EE website, networking with EE faculty, students and industrial friends.



<https://www.ee.cityu.edu.hk/jointlab>

# CityU EE Joint Lab Ceremony

Venue: Multidisciplinary Projects Lab @ P1402, 1/F,  
Yeung Kin Man Academic Building, CityU

Date: 2019-09-19



## CityU EE Joint Lab Ceremony

2:30-3:00pm	Reception
3:00pm-3:05pm	Start of Opening Ceremony
3:05pm-3:10pm	Welcoming Remark by Prof Stella Pang
3:10pm-3:13pm	Opening of EMSD-CityU EE Joint Lab
3:13pm-3:16pm	Opening of HKEIA-CityU EE Joint Lab
3:16pm-3:19pm	Opening of ASTRI-CityU EE Joint Lab
3:19pm-3:22pm	Opening of HKPC-CityU EE Joint Lab
3:22pm-3:25pm	Opening of APAS-CityU EE Joint Lab
3:25pm-3:28pm	Group Photo

## CityU EE Joint Lab Seminar

3:30pm-3:45pm	Introduction of CityU EE Joint Lab
3:45pm-4:00pm	Panel Discussion with EMSD, HKEIA, ASTRI, HKPC and APAS
4:00pm-4:30pm	CityU EE Project Presentation
4:30pm-5:30pm	Refreshment and Mingling

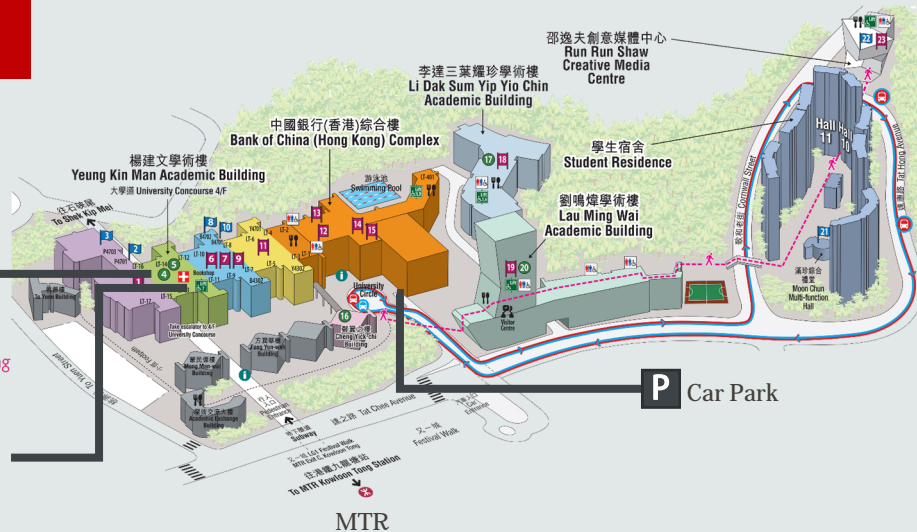


## Opening Ceremony

CityU EE Joint Lab@P1402, 1/F,  
Yeung Kin Man Academic Building



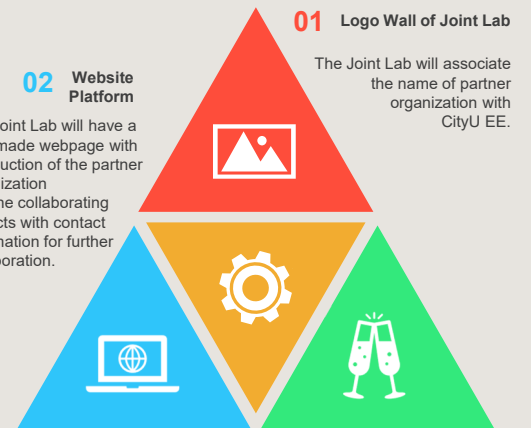
CityU EE@6/F,  
Yeung Kin Man Academic Building



## Benefits of CityU EE Joint Scheme

CityU EE Joint Lab Scheme offers the following acknowledgement to our partners:

- 1) Physical Sign on the Wall of Joint Lab
- 2) Webpage for Joint Lab
- 3) Launching Ceremony



The Joint Lab will associate the name of partner organization with CityU EE.

The Joint Lab will have a tailmade webpage with introduction of the partner organization and the collaborating projects with contact information for further collaboration.

The Joint Lab will be formally launched in a ceremony to announce it to partners, faculty members and students. Selected project and research presentation will be shared as a seminar.

## CityU EE Joint Lab Scheme

It is the hub for you to collaborate with our department for research and development. We welcome different organizations and corporations to establish a Joint Lab with us!



<https://www.ee.cityu.edu.hk/jointlab>