

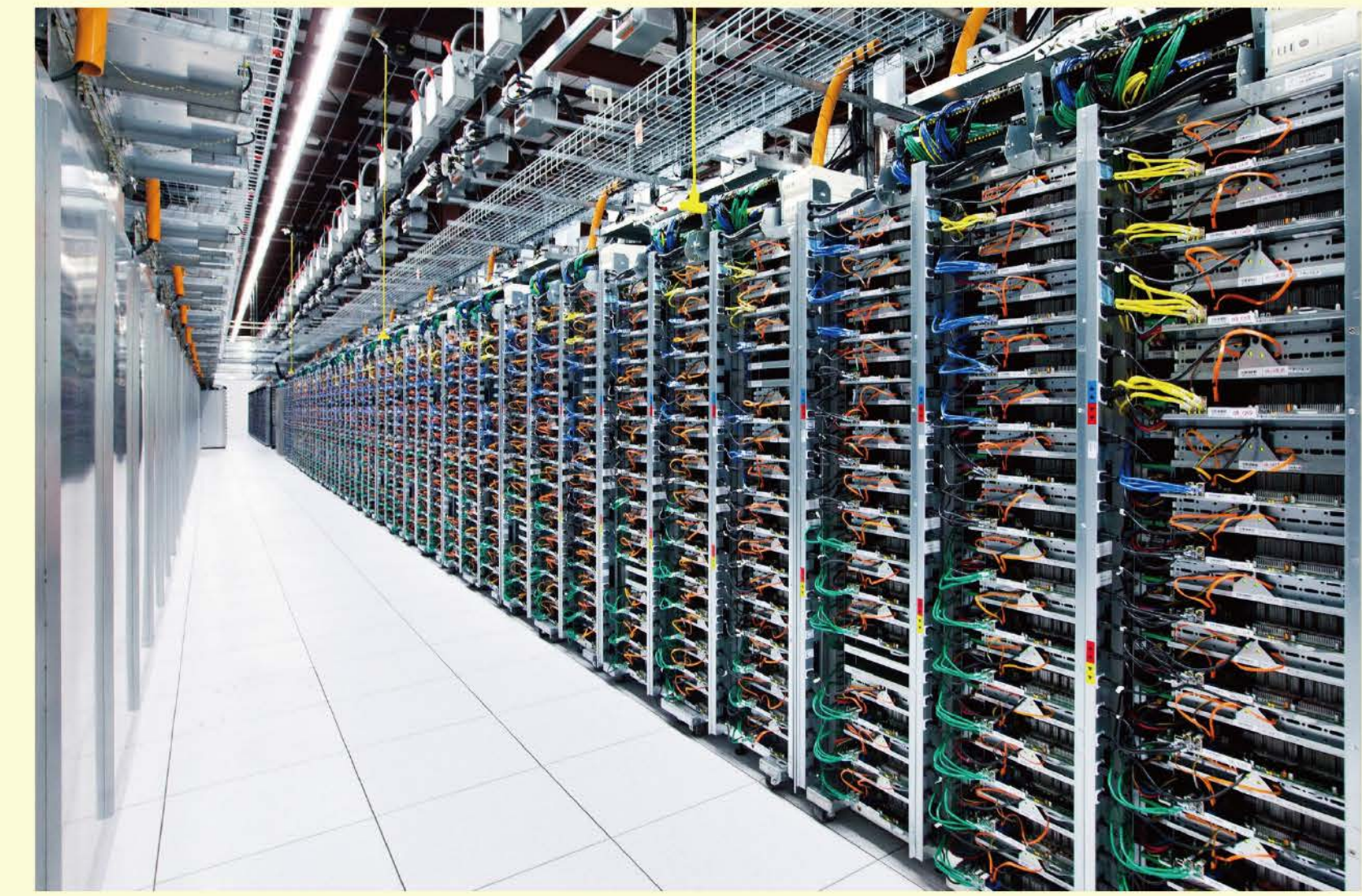
Student: TSANG Chin Yu

Programme: BEngINFE

Supervisor: Dr WONG, Eric W M

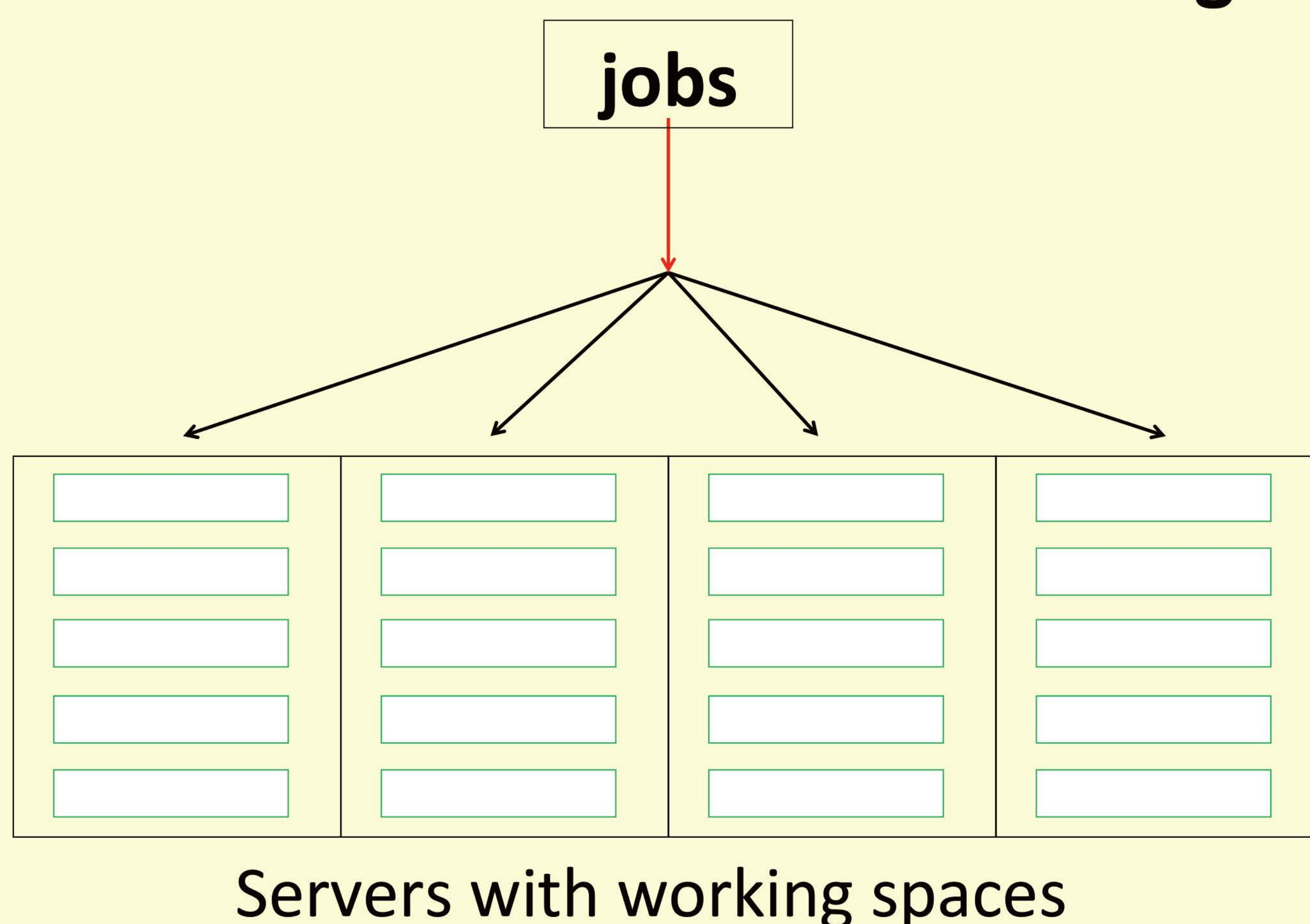
Objective / Background

- *Data centres handle vast amount of data*
- *Different ways to assign jobs, different energy efficiency*
- *How to assign jobs with better energy efficiency?*



Methodology

- *Run C++ simulation programmes*
- *Compare the ratio of system throughput and energy consumption*
- *Evaluate the efficiency of the assignment method*
- *Slower-server-first / load balancing*



(Order of job assignment)

A	B	C	D	E
1	2	3	16	21
4	5	6	17	22
7	8	9	18	23
10	11	12	19	24
13	14	15	20	25

Set a n^* value as boundary

Results

- *A mixed policy performs the best with ~30-70% improvement*
- *Heterogeneity and service rate of servers affect the performance results*

(Sample graph of efficiency evaluation)

