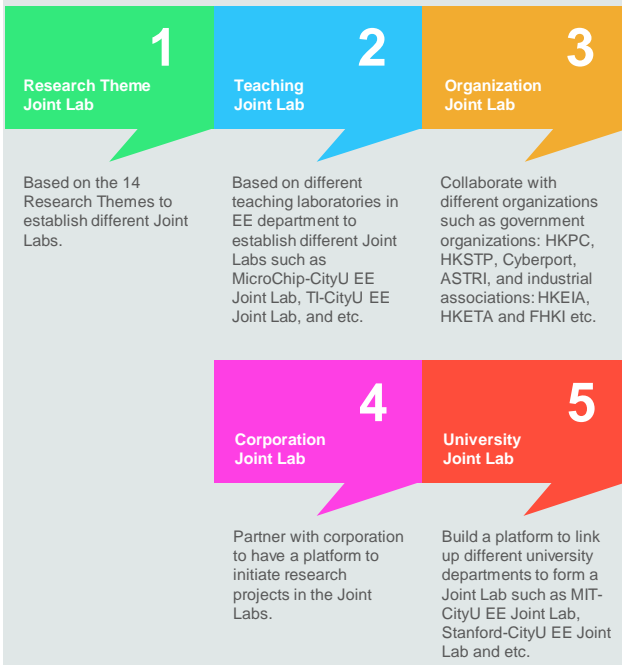


# CityU EE Research Theme

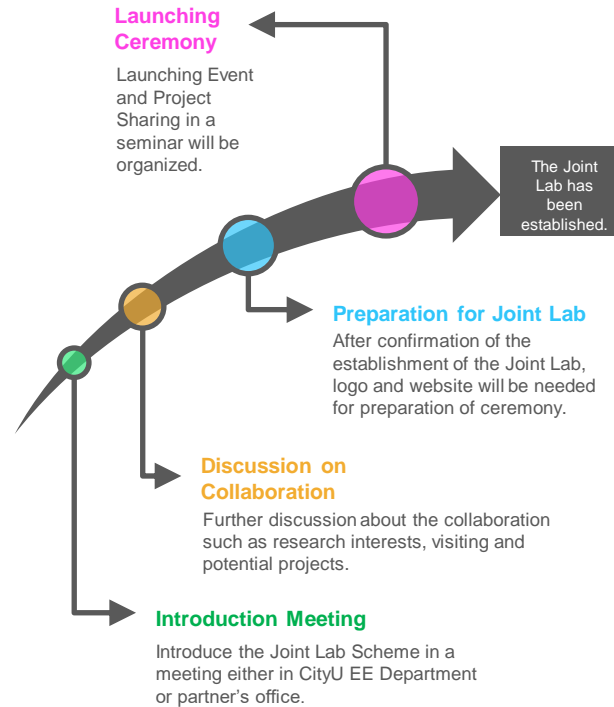
- Antenna Design
- Big data, Machine Learning and Artificial Intelligence
- Bioinformatics
- Biomedical System, Biosensors, Bioelectronics
- Computer Engineering
- Control System and Optimisation
- Microelectronic Devices and Circuits
- Nanotechnology and Nanodevices
- Networking and Internet of Things (IoT)
- Photonics
- Power Electronics and Systems
- Signal and Image Processing
- Terahertz and Millimeter Waves
- Wireless Communications

## CityU EE Joint Lab Scheme

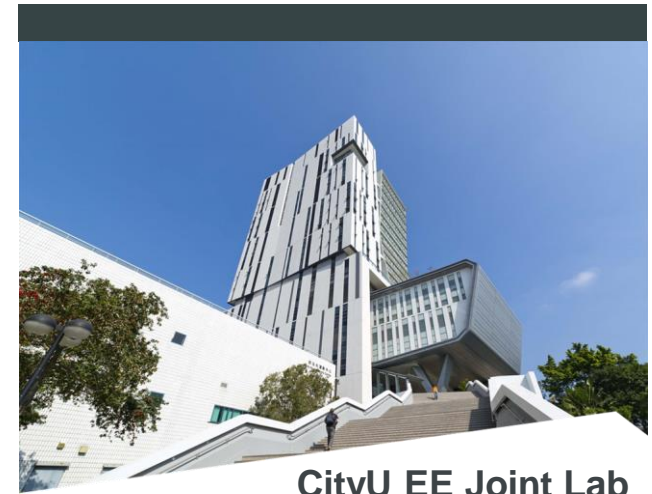
There are 5 types of CityU EE Joint Lab. The Joint Lab scheme can provide a platform to link up with different partners based on Research Theme, Teaching, Organization, Corporation and Institutional Department to drive closer collaborations.



# Procedures of the CityU EE Joint Lab Scheme

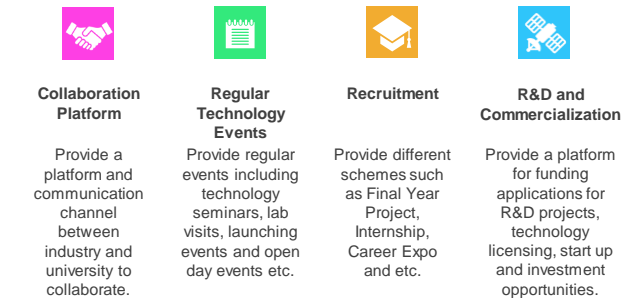


There are five steps to form a Joint Lab. The MOU will be signed between two parties. Then we will announce the collaboration in the launching ceremony.



## CityU EE Joint Lab

CityU EE Joint Lab is a Scheme of collaboration with industrial associations, research centres, corporates and organisations. Collaborative areas include setting up lab banner in EE Department, creating an online platform on EE website, networking with EE faculty, students and industrial friends.



<https://www.ee.cityu.edu.hk/jointlab>



# CityU EE Joint Lab Ceremony-Phase 3

Venue: Multidisciplinary Projects Lab @ P1402, 1/F,  
Yeung Kin Man Academic Building, CityU

Online: <https://cityu.zoom.us/j/93787614548> PW: 644475



Online Ceremony

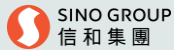
**Date: 2021-01-14**

## CityU EE Joint Lab Ceremony

2:00pm-2:30pm	Reception
2:30pm	Opening Ceremony starts
2:30pm-2:35pm	Welcome Speech by Professor Way Kuo (President and University Distinguished Professor)
2:35pm-2:40pm	Group Photo
2:40pm-2:45pm	Welcome Speech by Prof Stella Pang
2:45pm-2:50pm	Opening of ASM-CityU EE Joint Lab
2:50pm-2:55pm	Opening of GOLD PEAK-CityU EE Joint Lab
2:55pm-3:00pm	Opening of Microsoft-CityU EE Joint Lab
3:00pm-3:05pm	Opening of SINO-CityU EE Joint Lab
3:05pm-3:10pm	Opening of SmarTone-CityU EE Joint Lab
3:10pm-3:15pm	Opening of SUGA-CityU EE Joint Lab

## CityU EE Joint Lab Seminar

3:20pm-3:25pm	Introduction of CityU EE Joint Lab
3:25pm-3:55pm	Partners Sharing: ASM, GOLD PEAK, Microsoft, SINO Group, SmarTone and SUGA
3:55pm-4:00pm	Closing Remark



## Opening Ceremony

CityU EE Joint Lab@P1402, 1/F,  
Yeung Kin Man Academic Building

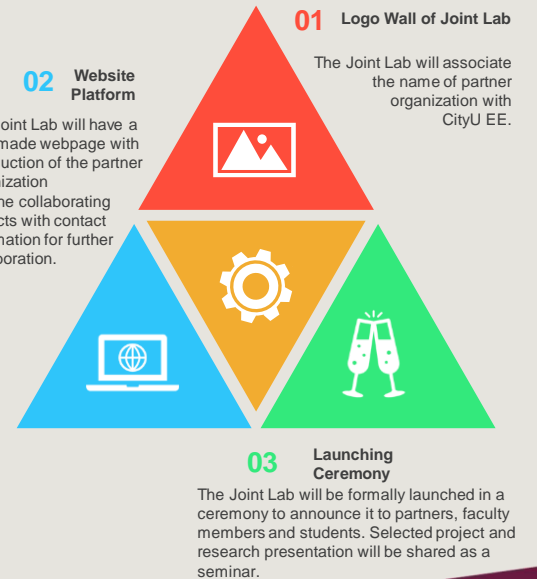


CityU EE@6/F,  
Yeung Kin Man Academic Building

## Benefits of CityU EE Joint Scheme

CityU EE Joint Lab Scheme offers the following acknowledgement to our partners:

- 1) Physical Sign on the Wall of Joint Lab
- 2) Webpage for Joint Lab
- 3) Launching Ceremony



## CityU EE Joint Lab Scheme

*It is the hub for you to collaborate with our department for research and development. We welcome different organizations and corporations to establish a Joint Lab with us!*

<https://www.ee.cityu.edu.hk/jointlab>

