

# CityU EE Research Theme

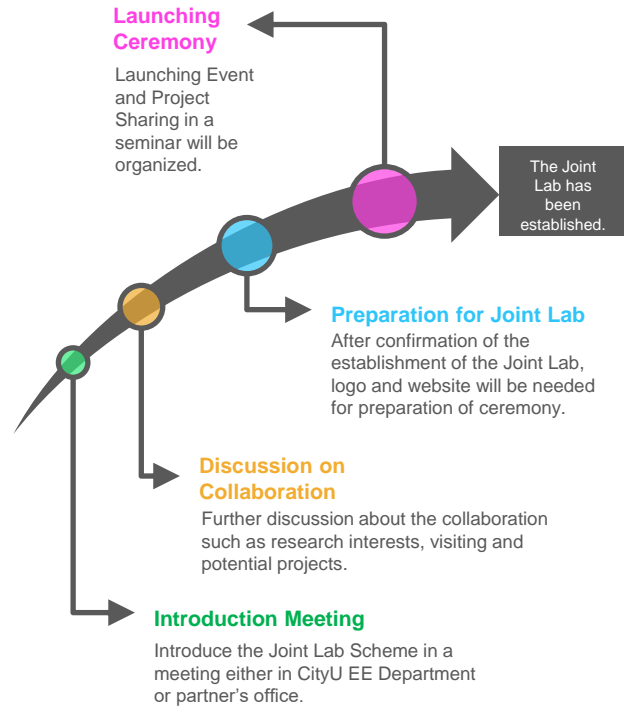
- Antenna Design
- Big data, Machine Learning and Artificial Intelligence
- Bioinformatics
- Biomedical System, Biosensors, Bioelectronics
- Computer Engineering
- Control System and Optimisation
- Microelectronic Devices and Circuits
- Nanotechnology and Nanodevices
- Networking and Internet of Things (IoT)
- Photonics
- Power Electronics and Systems
- Signal and Image Processing
- Terahertz and Millimeter Waves
- Wireless Communications

## CityU EE Joint Lab Scheme

There are 5 types of CityU EE Joint Lab. The Joint Lab scheme can provide a platform to link up with different partners based on Research Theme, Teaching, Organization, Corporation and Institutional Department to drive closer collaborations.



# Procedures of the CityU EE Joint Lab Scheme







There are five steps to form a Joint Lab. The MOU will be signed between two parties. Then we will announce the collaboration in the launching ceremony.



CityU EE Joint Lab

CityU EE Joint Lab is a Scheme of collaboration with industrial associations, research centres, corporates and organisations. Collaborative areas include setting up lab banner in EE Department, creating an online platform on EE website, networking with EE faculty, students and industrial friends.

			
<b>Collaboration Platform</b>	<b>Regular Technology Events</b>	<b>Recruitment</b>	<b>R&amp;D and Commercialization</b>
Provide a platform and communication channel between industry and university to collaborate.	Provide regular events including technology seminars, lab visits, launching events and open day events etc.	Provide different schemes such as Final Year Project, Internship, Career Expo and etc.	Provide a platform for funding applications for R&D projects, technology licensing, start up and investment opportunities.



香港城市大學  
City University of Hong Kong

[https://www.ee.cityu.edu.hk/research/cityu\\_ee\\_joint\\_lab/overview](https://www.ee.cityu.edu.hk/research/cityu_ee_joint_lab/overview)



# CityU EE Joint Lab Ceremony-Phase 5

Venue: Multidisciplinary Projects Lab @ P1402, 1/F,  
Yeung Kin Man Academic Building, CityU



Online: <https://cityu.zoom.us/j/98542913493> PW: 44847

Date: 2021-11-18

Online Ceremony

Online Ceremony



- 2:30pm-3:00pm Reception
- 3:00pm-3:05pm Welcome Speech by Prof Christian Wagner  
Provost of CityU
- 3:05pm-3:10pm Welcome Speech by Prof Stella Pang
- 3:10pm-3:13pm Opening of Cyberport-CityU EE Joint Lab
- 3:13pm-3:16pm Opening of Fujifilm-CityU EE Joint Lab
- 3:16pm-3:19pm Opening of Gravity-CityU EE Joint Lab
- 3:19pm-3:22pm Opening of HKSTP-CityU EE Joint Lab
- 3:22pm-3:25pm Opening of LSCM-CityU EE Joint Lab
- 3:25pm-3:28pm Opening of nVidia-CityU EE Joint Lab
- 3:25pm-3:28pm Group Photo



## CityU EE Joint Lab Location

CityU EE Joint Lab@P1402, 1/F,  
Yeung Kin Man Academic Building

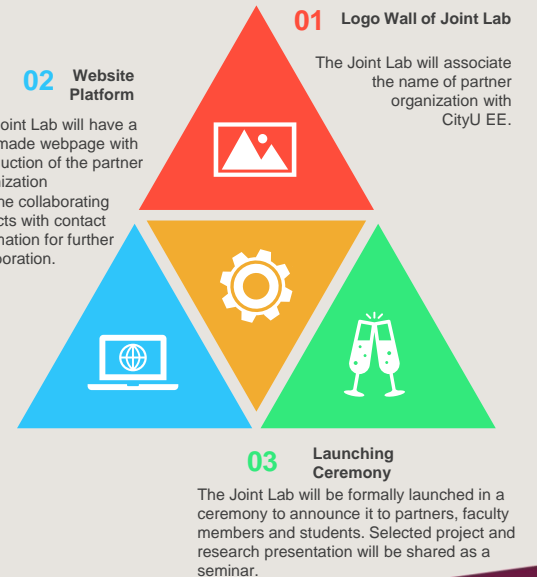


CityU EE@6/F,  
Yeung Kin Man Academic Building

## Benefits of CityU EE Joint Scheme

CityU EE Joint Lab Scheme offers the following acknowledgement to our partners:

- 1) Physical Sign on the Wall of Joint Lab
- 2) Webpage for Joint Lab
- 3) Launching Ceremony



## CityU EE Joint Lab Scheme

*It is the hub for you to collaborate with our department for research and development. We welcome different organizations and corporations to establish a Joint Lab with us!*

[https://www.ee.cityu.edu.hk/research/cityu\\_ee\\_joint\\_lab/overview](https://www.ee.cityu.edu.hk/research/cityu_ee_joint_lab/overview)

