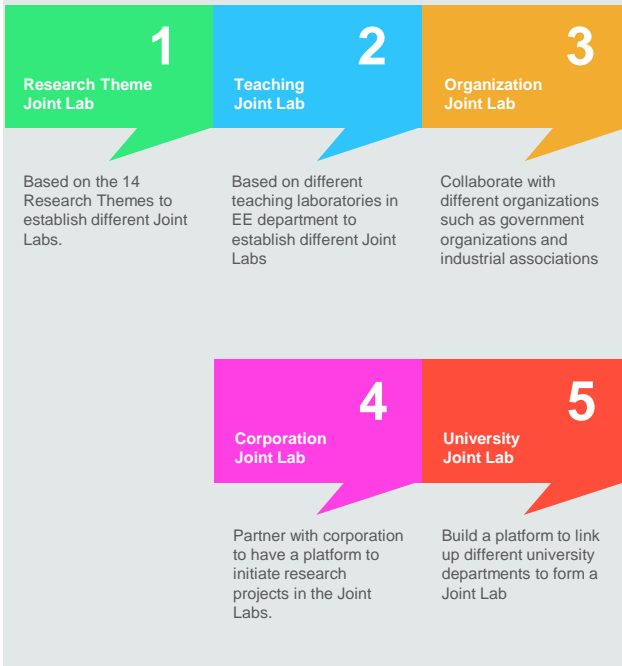


# CityU EE Research Theme

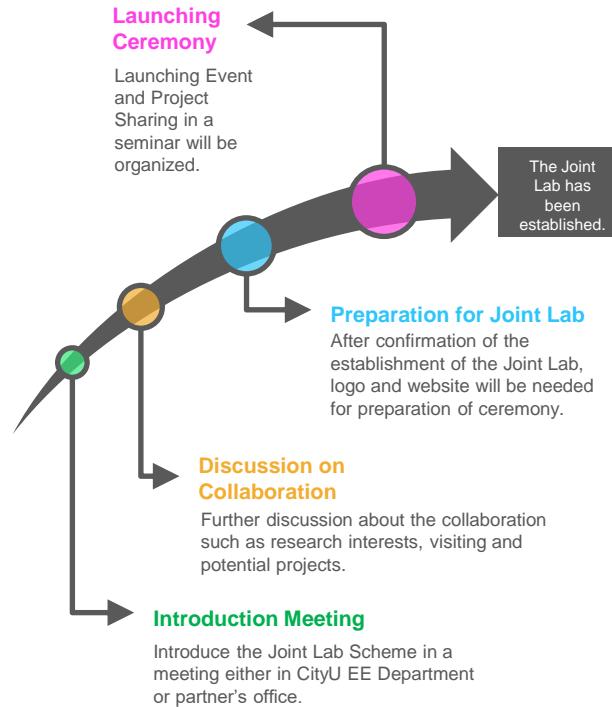
- Antenna Design
- Big data, Machine Learning and Artificial Intelligence
- Bioinformatics
- Biomedical System, Biosensors, Bioelectronics
- Computer Engineering
- Control System and Optimisation
- Microelectronic Devices and Circuits
- Nanotechnology and Nanodevices
- Networking and Internet of Things (IoT)
- Photonics
- Power Electronics and Systems
- Signal and Image Processing
- Terahertz and Millimeter Waves
- Wireless Communications

## CityU EE Joint Lab Scheme

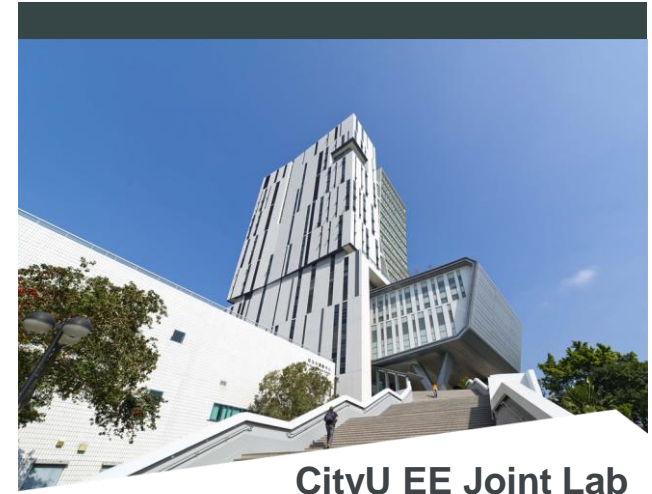
There are 5 types of CityU EE Joint Lab. The Joint Lab scheme can provide a platform to link up with different partners based on Research Theme, Teaching, Organization, Corporation and Institutional Department to drive closer collaborations.



# Procedures of the CityU EE Joint Lab Scheme

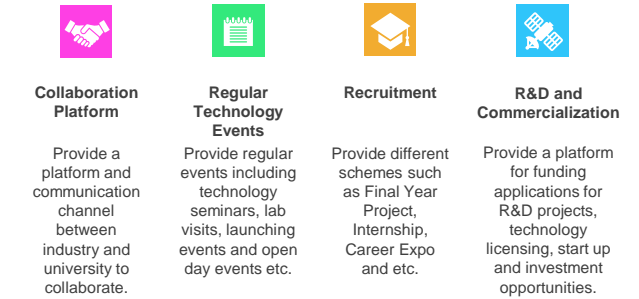


There are five steps to form a Joint Lab. The MOU will be signed between two parties. Then we will announce the collaboration in the launching ceremony.



CityU EE Joint Lab

CityU EE Joint Lab is a Scheme of collaboration with industrial associations, research centres, corporates and organisations. Collaborative areas include setting up lab banner in EE Department, creating an online platform on EE website, networking with EE faculty, students and industrial friends.



**CityU** Department of Electrical Engineering  
香港城市大學  
City University of Hong Kong

[https://www.ee.cityu.edu.hk/research/cityu\\_ee\\_joint\\_lab/overview](https://www.ee.cityu.edu.hk/research/cityu_ee_joint_lab/overview)



# CityU EE Joint Lab Ceremony-Phase 6

Venue: Multidisciplinary Projects Lab @ P1402, 1/F,

Yeung Kin Man Academic Building, CityU

Online: <https://cityu.zoom.us/j/96472816470> PW: 143948

Date: 2023-03-23



Alibaba Cloud

2:30pm-3:00pm

Reception

3:00pm-3:10pm

Welcome Speech by Prof KM Luk

3:10pm-3:13pm

Opening of Alibaba Cloud-CityU EE Joint Lab

3:13pm-3:16pm

Opening of Deloitte-CityU EE Joint Lab

3:16pm-3:19pm

Opening of Fujikon-CityU EE Joint Lab

3:19pm-3:22pm

Opening of HKT-CityU EE Joint Lab

3:22pm-3:25pm

Opening of iOS Club-CityU EE Joint Lab

3:25pm-3:28pm

Opening of Mobicon-CityU EE Joint Lab

3:25pm-3:28pm

Group Photo



Deloitte.

HKT®

MOBICON  
Electronic Components

## CityU EE Joint Lab Location

CityU EE Joint Lab@P1402, 1/F, Yeung Kin Man Academic Building

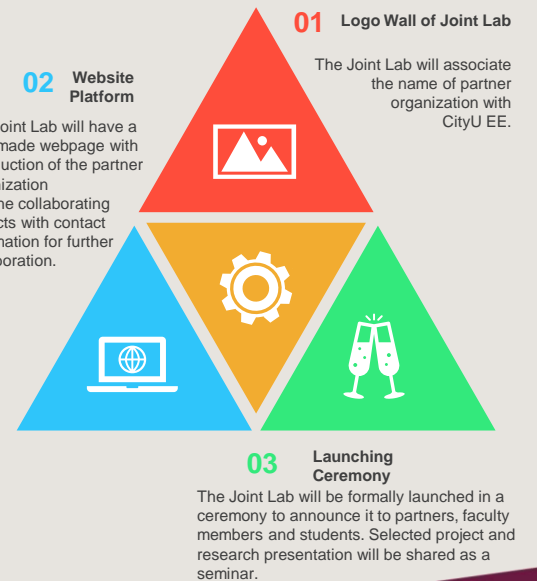


CityU EE@6/F, Yeung Kin Man Academic Building

## Benefits of CityU EE Joint Scheme

CityU EE Joint Lab Scheme offers the following acknowledgement to our partners:

- 1) Physical Sign on the Wall of Joint Lab
- 2) Webpage for Joint Lab
- 3) Launching Ceremony



## CityU EE Joint Lab Scheme

*It is the hub for you to collaborate with our department for research and development. We welcome different organizations and corporations to establish a Joint Lab with us!*

[https://www.ee.cityu.edu.hk/research/cityu\\_ee\\_joint\\_lab/overview](https://www.ee.cityu.edu.hk/research/cityu_ee_joint_lab/overview)

